



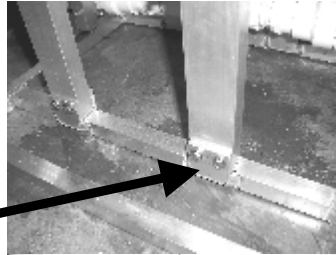
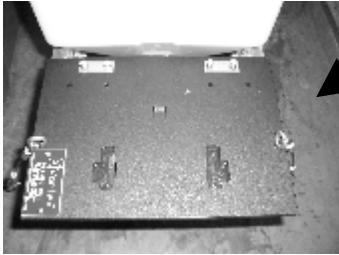
Vortex™

Granular Systems, LLC

Contact: 877-8VORTEX or 954-650-7590 Web: www.vortexspreader.com

SPS Assembly Instructions

1. Match front of unit (blower shelf side) with tagged front of base

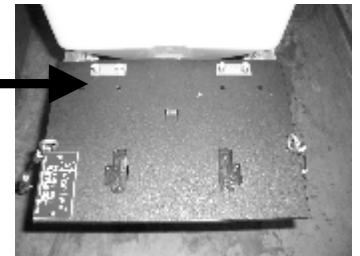
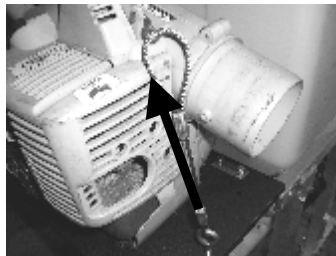


2. Insert legs into base and do not tighten bolts until top of legs are placed in top of unit

3. Tighten top portion of legs and unit top

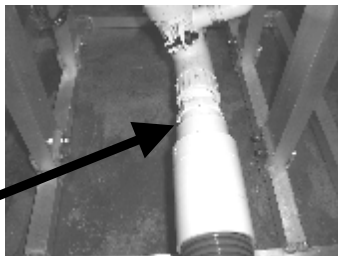


4. Slide blower shelf over round tubes and tighten u-bolts with 7/16" wrench



5. Set blower into milled slots in blower shelf.

6. Cable blower on both sides and tighten nylock wing nuts (note: plastic shelf will bow slightly to form around blower legs)



7. Thread blower hose into manifold (note: tighten only a few turns into the manifold, there is no need to have this threaded all the way into the manifold) Please Note: We have changed to a 60 degree turn and a shorter hose.

8. Slide the black rubber connector of the blower hose over the blower outlet and tighten the thumb clamp securely.

9. Install 45 degree fitting into manifold and then black filter. Do not over tighten either part. This is removed for shipping.